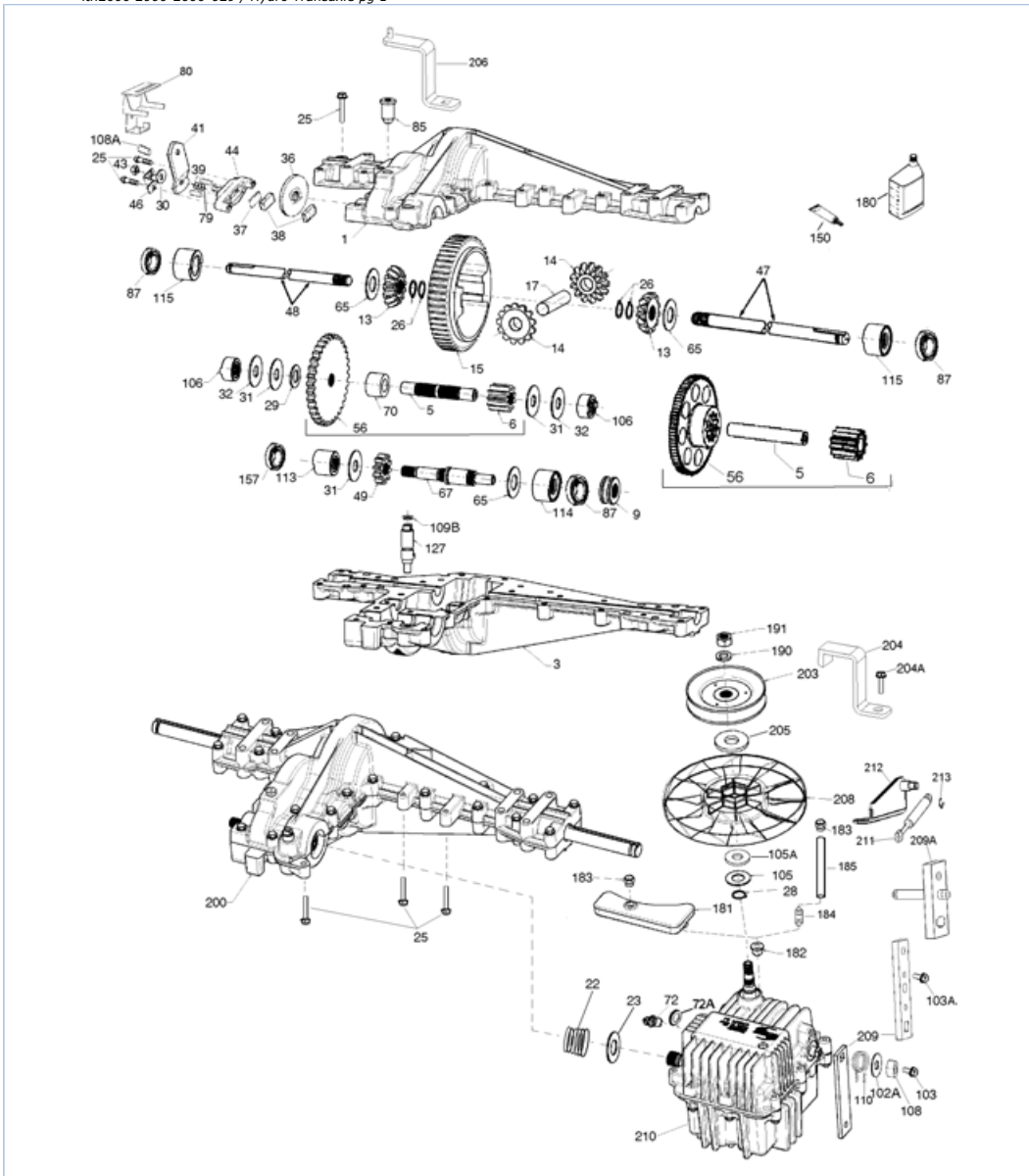


lth2000 2000-2000-029 / Hydro Transaxle pg 1

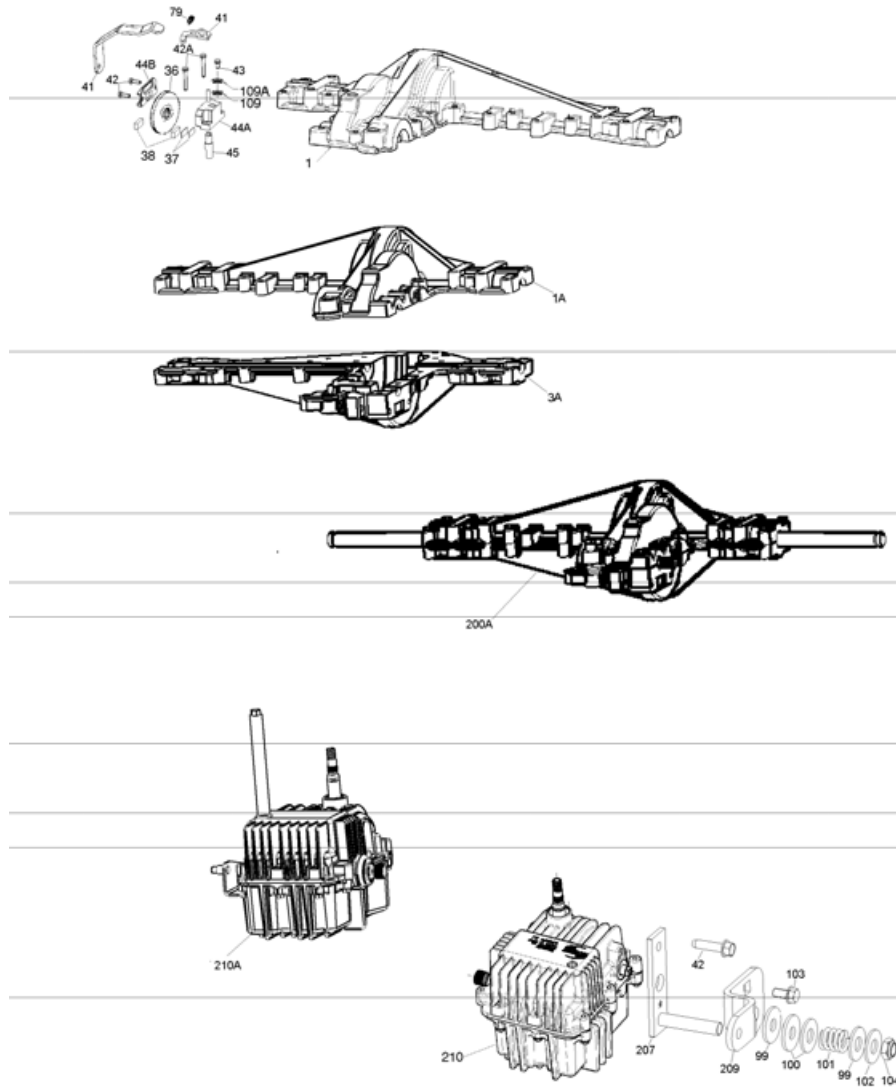


Part List

lth2000 2000-2000-029 / Hydro Transaxle pg 1

| REF # | ITEM # | DESCRIPTION | QTY | REMARK |
|-------|---------|----------------------------------|-----|----------------------|
| 5 | 776445 | Counter Shaft | 1 | |
| 6 | 778387 | Spur Gear 11T | 1 | |
| 9 | 786197 | Neutral Sleeve .572L | 1 | |
| 13 | 778368 | Bevel Gear 13T (Incl. 14) | 2 | |
| 14 | 778368 | Bevel Gear 13T (Incl. 13) | 2 | |
| 15 | 778373 | Ring Gear 54T | 1 | |
| 17 | 786139 | Drive Pin | 1 | |
| 22 | 792194 | Spring | 1 | |
| 23 | 792195 | Washer .750ID .032T | 1 | |
| 25 | 792073A | Screw 1/4-20 x 1.25 | 27 | |
| 26 | 792125 | Retaining Ring | 4 | |
| 28 | 792035 | Retaining Ring | 1 | |
| 29 | 780179 | Washer .627ID .140W | 1 | |
| 30 | 792076A | Washer .312ID .059W | 1 | |
| 31 | 780189 | Washer .563ID .062W | 2 | |
| 36 | 790075 | Brake Disk | 1 | |
| 37 | 790007 | Brake Pad Plate | 1 | |
| 38 | 799021 | Brake Pad | 2 | |
| 39 | 786026 | Dowel Pin .3125 x .750 | 2 | |
| 41 | 790097 | Brake Lever | 1 | |
| 43 | 792075 | Lock Nut 5/16-24 | 1 | |
| 44 | 790025 | Brake Pad Holder | 1 | |
| 46 | 786086 | Bracket | 1 | |
| 47 | 774953 | Axle 14.750 | 1 | |
| 48 | 774954 | Axle 9.562 | 1 | |
| 49 | 778388 | Spur Gear 18T | 1 | |
| 56 | 778386 | Spur Gear 81T | 1 | |
| 65 | 780001 | Washer .750ID .056W | 3 | |
| 67 | 776440 | Brake Shaft | 1 | |
| 80 | 790098 | Brake Lever Guide | 1 | |
| 85 | 792154 | Oil Fill Plug | 1 | |
| 87 | 788088A | Oil Seal .750 | 3 | |
| 103 | 792193 | Screw 1/4-28 x .490 | 1 | |
| 103A | 792205 | Screw, 1/4-20 x .406 | 2 | |
| 105 | 780096 | Washer .625ID .057W | 1 | |
| 106 | 786205 | Needle Bearing & Sleeve Assembly | 2 | |
| 108 | 786202 | Spacer .510ID | 1 | |
| 109B | 788104 | O-Ring .364ID | 1 | |
| 110 | 798052 | Neutral Return Spring | 1 | |
| 113 | 786199 | Sleeve Assembly (Incl. 157) | 1 | |
| 114 | 786200 | Sleeve Assembly (Incl. 87) | 1 | |
| 115 | 786198 | Sleeve Assembly (Incl. 87) | 2 | |
| 127 | 784385 | Shift Lever Assembly (Incl. 109) | 1 | |
| 150 | 788093A | Liquid Gasket RTV Silicon | 1 | |
| 157 | 788102 | Oil Seal .5625ID | 1 | |
| 180 | 730229B | Gear Oil 80W90 | 1 | |
| 182 | 788103 | Grommet | 1 | |
| 183 | 792118 | Relief Valve | 1 | |
| 184 | 792196 | Hose Barb | 1 | |
| 185 | 798050 | Tubing .50 x 5 | 1 | |
| 190 | 792150 | Washer .443ID .109W | 1 | |
| 191 | 792151 | Nut 7/16-20 | 1 | |
| 200 | 794740 | Differential RH | 1 | Gear Reduction Drive |
| 203 | 798046 | Pulley & Hub Assembly | 1 | |
| 208 | 798040 | Fan | 1 | |
| 209 | 798047A | Control Lever | 1 | |
| 209A | 798051 | Shift Lever Assembly | 1 | |
| 210 | 794786 | Hydro Module RH (Foot Control) | 1 | |
| 211 | 798048 | Shock | 1 | |
| 212 | 798049 | Shock Bracket | 1 | |
| 213 | 792197 | E-clip | 2 | |

lth2000a 2000-2000-029 / Hydro Transaxle pg 2



Part List

lth2000a 2000-2000-029 / Hydro Transaxle pg 2

| REF # | ITEM # | DESCRIPTION | QTY | REMARK |
|-------|---------|--------------------------------|-----|--------|
| 1A | 772154 | Cover RH (Mach) | 1 | |
| 3A | 770136 | Case RH (Cast) | 1 | |
| 36 | 790075 | Brake Disk | 1 | |
| 37 | 790007 | Brake Pad Plate | 1 | |
| 38 | 799021 | Brake Pad | 2 | |
| 41 | 790097 | Brake Lever | 1 | |
| 42 | 792177 | Screw 1/4-20 x 1.375 | 2 | |
| 43 | 792075 | Lock Nut 5/16-24 | 1 | |
| 103 | 792193 | Screw 1/4-28 x .490 | 1 | |
| 209 | 798047A | Control Lever | 1 | |
| 210 | 794786 | Hydro Module RH (Foot Control) | 1 | |